

# 2010 Six Hour Endurance Championship

## Phillip Island Grand Prix Circuit

December 3 - 5

### SIDECARS

#### Race 2



Date: 04/12/10  
Event: R08  
Weather: Partly Cloudy - Temp: 22.4.C  
Track: Dry - Temp 35.5C

Started at: 12:05:27  
Laps: 8  
Starters: 12  
Printed at: 13:38

### PROVISIONAL RESULTS

Pos	No	Gr	Name	Machine	Laps	Race Time	Behind	Fastest Lap	On Lap
1	1		Shane SOUTAR / Jeff ROWE (VIC) / Adams Print	Suzuki LCR 1000	8	13:53.376		1:42.206	7
2	3		Paul JACOBS / Steve BONNEY (QLD) / Wells Smash Repairs	Suzuki LCR 1000	8	14:00.882	1.039	1:43.245	2
3	14		Dwight BEARE / Noel BEARE (VIC) / Beare Boys Racing	Alvin	8	15:13.069	8.544	1:50.750	2
4	16		Darryl RAYNER / Peter CUMMING (NSW)	Shelbourne	8	15:24.963	10.886	1:53.092	2
5	55		Duncan ROGERS / Rodney BELL (VIC)	Suzuki LCR 1000	8	15:30.469	12.427	1:54.633	2
6	60		Ron MARTEN / Gavin SMITH (VIC)	Random	8	15:46.225	13.669	1:55.875	7
7	38		John CLANCY / Chrissie CLANCY (VIC)	LCR 600	8	15:50.876	14.966	1:57.172	5
8	18		Glenn HERBERT / Helen HERBERT (SA)	Yamaha R6	7	13:55.704	14.895	1:57.101	3
9	69		Justin FOOT / Melissa FOOT (NSW)	Suzuki GSXR 1000	7	14:37.570	15.020	1:57.226	3
10	71		David DICKIE / Joanne DICKIE (NSW)	ECM 600	7	14:41.035	21.606	2:03.812	2
DNF	5		Mick ALTON / Mark PATTERSON (NSW)	Shelbourne Honda 600	0		-1:42.206		
DNF	57		Chris GRUBB / Janina GORSKI (VIC)	Alvin	0		-1:42.206		

Fastest Lap was 1:42.206 by Shane SOUTAR / Jeff ROWE (VIC)

Current qualifying record for SCR class - 1:40.526 by Steve ABBOTT / Jamie BIGGS (UK) on a set on 12/11/05

The results are provisional until the end of the time limit for protests and appeals.

Chief Time Keeper - Ruth Souter

Clerk of Course - Brendan Ferrari

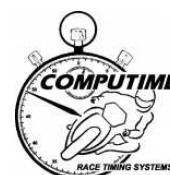
Computime Race Timing Systems Pty Ltd © 1996-2008  
Licensed to Computime Race Timing Systems

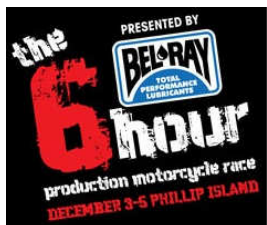
[www.computime.com.au](http://www.computime.com.au)

**COMPUTIME RACE TIMING SYSTEMS PTY LTD**

9 Timber Lane, Glen Waverley, Vic 3150. Ph : (03) 9803-7110

E-mail : [scott@computime.com.au](mailto:scott@computime.com.au)





# 2010 Six Hour Endurance Championship

## Phillip Island Grand Prix Circuit

December 3 - 5

**SIDECARS**

**Race 2**



Date: 04/12/10  
Event: R08  
Weather: Partly Cloudy - Temp: 22.4.C  
Track: Dry - Temp 35.5C

Started at: 12:05:27  
Laps: 8  
Starters: 12  
Printed at: 13:38

### PROVISIONAL LAP TIMES

No	Name	Lap 1	Lap 2	Lap 3	Lap 4	Lap 5	Lap 6	Lap 7	Lap 8
1	Shane SOUTAR / Jeff ROWE (VIC)	1:50.584	1:42.786	1:43.431	1:42.684	1:42.355	1:43.500	<b>1:42.206</b>	1:45.022
3	Paul JACOBS / Steve BONNEY (QLD)	1:49.104	<b>1:43.245</b>	1:43.482	1:44.029	1:44.123	1:45.434	1:44.943	1:44.788
14	Dwight BEARE / Noel BEARE (VIC)	1:58.616	<b>1:50.750</b>	1:51.237	1:51.102	1:53.034	1:54.951	1:55.131	1:55.481
16	Darryl RAYNER / Peter CUMMING (NSW)	1:58.592	<b>1:53.092</b>	1:53.137	1:53.324	1:55.320	1:54.782	1:56.016	1:57.928
18	Glenn HERBERT / Helen HERBERT (SA)	2:00.786	1:58.505	<b>1:57.101</b>	1:58.289	1:58.082	1:59.032	1:58.941	
38	John CLANCY / Chrissie CLANCY (VIC)	2:02.944	1:58.077	1:57.609	1:57.677	<b>1:57.172</b>	1:57.942	1:57.461	1:57.685
55	Duncan ROGERS / Rodney BELL (VIC)	1:58.805	<b>1:54.633</b>	1:55.019	1:55.308	1:55.977	1:56.761	1:55.265	1:55.225
60	Ron MARTEN / Gavin SMITH (VIC)	2:01.148	1:58.669	1:57.114	1:57.577	1:56.309	1:57.217	<b>1:55.875</b>	1:58.614
69	Justin FOOT / Melissa FOOT (NSW)	2:02.730	1:58.105	<b>1:57.226</b>	2:26.569	2:02.080	2:03.306	2:03.414	
71	David DICKIE / Joanne DICKIE (NSW)	2:07.461	<b>2:03.812</b>	2:05.264	2:05.288	2:06.048	2:03.921	2:04.130	

The results are provisional until the end of the time limit for protests and appeals.

Chief Time Keeper - Ruth Souter

Clerk of Course - Brendan Ferrari

Computime Race Timing Systems Pty Ltd © 1996-2008  
Licensed to Computime Race Timing Systems

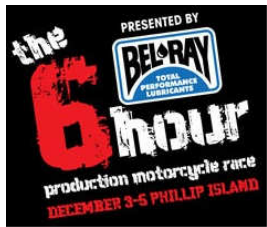
[www.computime.com.au](http://www.computime.com.au)

**COMPUTIME RACE TIMING SYSTEMS PTY LTD**

9 Timber Lane, Glen Waverley, Vic 3150. Ph : (03) 9803-7110

E-mail : [scott@computime.com.au](mailto:scott@computime.com.au)





# 2010 Six Hour Endurance Championship

## Phillip Island Grand Prix Circuit

December 3 - 5

### SIDECARS

#### Race 2



Date: 04/12/10  
Event: R08  
Weather: Partly Cloudy - Temp: 22.4 C  
Track: Dry - Temp 35.5C

Started at: 12:05:27  
Laps: 8  
Starters: 12  
Printed at: 13:38

### PROVISIONAL FASTEST LAPS SEQUENCE

Race Time	No	Name	Machine	Fastest Lap	On Lap
1:50.838	3	Paul JACOBS / Steve BONNEY (QLD)	Suzuki LCR 1000	1:49.104	1
3:34.083	3	Paul JACOBS / Steve BONNEY (QLD)	Suzuki LCR 1000	1:43.245	2
3:34.178	1	Shane SOUTAR / Jeff ROWE (VIC)	Suzuki LCR 1000	1:42.786	2
7:00.293	1	Shane SOUTAR / Jeff ROWE (VIC)	Suzuki LCR 1000	1:42.684	4
8:42.648	1	Shane SOUTAR / Jeff ROWE (VIC)	Suzuki LCR 1000	1:42.355	5
12:08.354	1	Shane SOUTAR / Jeff ROWE (VIC)	Suzuki LCR 1000	1:42.206	7

The results are provisional until the end of the time limit for protests and appeals.

Chief Time Keeper - Ruth Souter

Clerk of Course - Brendan Ferrari

Computime Race Timing Systems Pty Ltd © 1996-2008  
Licensed to Computime Race Timing Systems

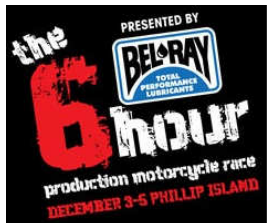
[www.computime.com.au](http://www.computime.com.au)

**COMPUTIME RACE TIMING SYSTEMS PTY LTD**

9 Timber Lane, Glen Waverley, Vic 3150. Ph : (03) 9803-7110

E-mail : [scott@computime.com.au](mailto:scott@computime.com.au)





# 2010 Six Hour Endurance Championship

## Phillip Island Grand Prix Circuit

December 3 - 5

SIDECARS



Date: 04/12/10  
Event: R08  
Weather: Partly Cloudy - Temp: 22.4.C  
Track: Dry - Temp 35.5C

Started at: 12:05:27  
Laps: 8  
Starters: 12  
Printed at: 13:38

### PROVISIONAL GRID SHEET



1	1 SOUTAR / ROWE 1:42.206	2	3 JACOBS / BONNE 1:43.245	3	14 BEARE / BEARE 1:50.750	4	16 RAYNER / CUM 1:53.092
2	55 ROGERS / BELL 1:54.633	6	60 MARTEN / SMIT 1:55.875	7	18 HERBERT / HER 1:57.101	8	38 CLANCY / CLAN 1:57.172
3	69 FOOT / FOOT 1:57.226	10	71 DICKIE / DICKIE 2:03.812				

The results are provisional until the end of the time limit for protests and appeals.

Chief Time Keeper - Ruth Souter

Clerk of Course - Brendan Ferrari

Computime Race Timing Systems Pty Ltd © 1996-2008  
Licensed to Computime Race Timing Systems

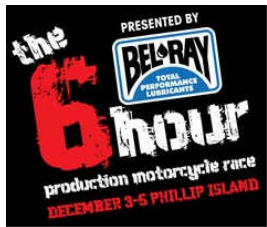
[www.computime.com.au](http://www.computime.com.au)

**COMPUTIME RACE TIMING SYSTEMS PTY LTD**

9 Timber Lane, Glen Waverley, Vic 3150. Ph : (03) 9803-7110

E-mail : [scott@computime.com.au](mailto:scott@computime.com.au)





# 2010 Six Hour Endurance Championship

## Phillip Island Grand Prix Circuit

December 3 - 5

SIDECARS

Race 2



Date: 04/12/10  
 Event: R08  
 Weather: Partly Cloudy - Temp: 22.4.C  
 Track: Dry - Temp 35.5C

Started at: 12:05:27  
 Laps: 8  
 Starters: 12  
 Printed at: 13:38

### PROVISIONAL LAP CHART

1	2	3	4	5	6	7	8
3	3	3	1	1	1	1	1
1	1	1	3	3	3	3	3
16	14	14	14	14	14	14	14
14	16	16	16	16	16	16	16
55	55	55	55	55	55	55	55
60	60	60	60	60	60	60	60
18	18	18	18	18	38	38	38
69	69	69	38	38	18	18	
38	38	38	71	69	69	69	
71	71	71	69	71	71	71	

The results are provisional until the end of the time limit for protests and appeals.

Chief Time Keeper - Ruth Souter

Clerk of Course - Brendan Ferrari

Computime Race Timing Systems Pty Ltd © 1996-2008  
 Licensed to Computime Race Timing Systems

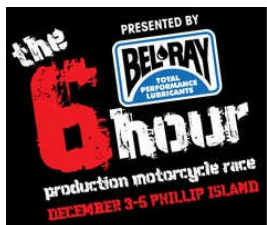
[www.computime.com.au](http://www.computime.com.au)

**COMPUTIME RACE TIMING SYSTEMS PTY LTD**

9 Timber Lane, Glen Waverley, Vic 3150. Ph : (03) 9803-7110

E-mail : [scott@computime.com.au](mailto:scott@computime.com.au)





# 2010 Six Hour Endurance Championship

## Phillip Island Grand Prix Circuit

December 3 - 5

### SIDECARS

#### Race 2



Date: 04/12/10  
Event: R08  
Weather: Partly Cloudy - Temp: 22.4.C  
Track: Dry - Temp 35.5C

Started at: 12:05:27  
Laps: 8  
Starters: 12  
Printed at: 13:38

### PROVISIONAL SPLIT TIMES

Lap	Split 1	Split 2	Lap Time	Lap	Split 1	Split 2	Lap Time
-----	---------	---------	----------	-----	---------	---------	----------

#### 1 Shane SOUTAR / Jeff ROWE (VIC) (1st)

1	39.240	1:11.344	1:50.584
2	32.538	1:10.248	1:42.786
3	32.624	1:10.807	1:43.431
4	32.640	1:10.044	1:42.684
5	<b>32.217</b>	1:10.138	1:42.355
6	32.573	1:10.927	1:43.500
7	32.548	<b>1:09.658</b>	<b>1:42.206</b>
8	32.889	1:12.133	1:45.022

#### 3 Paul JACOBS / Steve BONNEY (QLD) (2nd)

1	38.000	1:11.104	1:49.104
2	32.826	<b>1:10.419</b>	<b>1:43.245</b>
3	<b>32.516</b>	1:10.966	1:43.482
4	33.089	1:10.940	1:44.029
5	32.937	1:11.186	1:44.123
6	32.796	1:12.638	1:45.434
7	32.802	1:12.141	1:44.943
8	33.273	1:11.515	1:44.788

#### 14 Dwight BEARE / Noel BEARE (VIC) (3rd)

1	41.593	1:17.023	1:58.616
2	<b>34.923</b>	1:15.827	<b>1:50.750</b>
3	35.285	1:15.952	1:51.237
4	35.584	<b>1:15.518</b>	1:51.102
5	35.388	1:17.646	1:53.034
6	36.191	1:18.760	1:54.951
7	36.111	1:19.020	1:55.131
8	36.081	1:19.400	1:55.481

#### 16 Darryl RAYNER / Peter CUMMING (NSW)

(4th)

1	40.316	1:18.276	1:58.592
2	35.808	<b>1:17.284</b>	<b>1:53.092</b>
3	<b>35.656</b>	1:17.481	1:53.137
4	35.859	1:17.465	1:53.324
5	36.520	1:18.800	1:55.320

#### 18 Glenn HERBERT / Helen HERBERT (SA)

(7th)

1	41.049	1:19.737	2:00.786
2	37.703	1:20.802	1:58.505
3	<b>37.447</b>	<b>1:19.654</b>	<b>1:57.101</b>
4	38.330	1:19.959	1:58.289
5	37.931	1:20.151	1:58.082
6	38.366	1:20.666	1:59.032
7	38.077	1:20.864	1:58.941

#### 38 John CLANCY / Chrissie CLANCY (VIC)

(8th)

1	42.739	1:20.205	2:02.944
2	37.778	1:20.299	1:58.077
3	37.671	1:19.938	1:57.609
4	38.542	<b>1:19.135</b>	1:57.677
5	<b>37.568</b>	1:19.604	<b>1:57.172</b>
6	38.593	1:19.349	1:57.942
7	38.185	1:19.276	1:57.461
8	37.814	1:19.871	1:57.685

#### 55 Duncan ROGERS / Rodney BELL (VIC)

(5th)

1	40.688	<b>1:18.117</b>	1:58.805
2	36.257	1:18.376	<b>1:54.633</b>
3	36.294	1:18.725	1:55.019
4	<b>36.055</b>	1:19.253	1:55.308
5	36.217	1:19.760	1:55.977
6	37.137	1:19.624	1:56.761
7	36.695	1:18.570	1:55.265
8	36.784	1:18.441	1:55.225

#### 60 Ron MARTEN / Gavin SMITH (VIC) (6th)

1	40.872	1:20.276	2:01.148
2	37.651	1:21.018	1:58.669
3	37.487	1:19.627	1:57.114
4	37.574	1:20.003	1:57.577
5	37.374	1:18.935	1:56.309
6	37.376	1:19.841	1:57.217

Chief Time Keeper - Ruth Souter

Clerk of Course - Brendan Ferrari

Computime Race Timing Systems Pty Ltd © 1996-2008  
Licensed to Computime Race Timing Systems

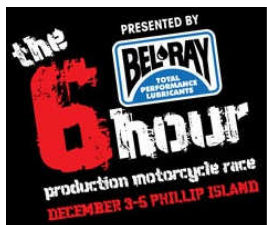
[www.computime.com.au](http://www.computime.com.au)

**COMPUTIME RACE TIMING SYSTEMS PTY LTD**

9 Timber Lane, Glen Waverley, Vic 3150. Ph : (03) 9803-7110

E-mail : [scott@computime.com.au](mailto:scott@computime.com.au)





# 2010 Six Hour Endurance Championship

## Phillip Island Grand Prix Circuit

December 3 - 5

### SIDECARS

#### Race 2



Date: 04/12/10  
Event: R08  
Weather: Partly Cloudy - Temp: 22.4.C  
Track: Dry - Temp 35.5C

Started at: 12:05:27  
Laps: 8  
Starters: 12  
Printed at: 13:38

### PROVISIONAL SPLIT TIMES

Lap	Split 1	Split 2	Lap Time	Lap	Split 1	Split 2	Lap Time
-----	---------	---------	----------	-----	---------	---------	----------

6	36.716	1:18.066	1:54.782
7	36.416	1:19.600	1:56.016
8	36.669	1:21.259	1:57.928

7	37.181	<u>1:18.694</u>	<u>1:55.875</u>
8	<u>36.933</u>	1:21.681	1:58.614

#### 69 Justin FOOT / Melissa FOOT (NSW) (9th)

1	41.634	1:21.096	2:02.730
2	37.580	1:20.525	1:58.105
3	<u>37.298</u>	<u>1:19.928</u>	<u>1:57.226</u>
4	38.447	1:48.122	2:26.569
5	39.267	1:22.813	2:02.080
6	39.635	1:23.671	2:03.306
7	40.092	1:23.322	2:03.414

#### 71 David DICKIE / Joanne DICKIE (NSW) (10th)

1	43.114	1:24.347	2:07.461
2	39.892	1:23.920	<u>2:03.812</u>
3	40.926	1:24.338	2:05.264
4	40.153	1:25.135	2:05.288
5	40.485	1:25.563	2:06.048
6	<u>39.829</u>	1:24.092	2:03.921
7	40.294	<u>1:23.836</u>	2:04.130

The results are provisional until the end of the time limit for protests and appeals.

Chief Time Keeper - Ruth Souter

Clerk of Course - Brendan Ferrari

Computime Race Timing Systems Pty Ltd © 1996-2008  
Licensed to Computime Race Timing Systems

[www.computime.com.au](http://www.computime.com.au)

**COMPUTIME RACE TIMING SYSTEMS PTY LTD**

9 Timber Lane, Glen Waverley, Vic 3150. Ph : (03) 9803-7110

E-mail : [scott@computime.com.au](mailto:scott@computime.com.au)

